

**Mammaglobin-1 Antibody**  
**Purified Mouse Monoclonal Antibody**  
**Catalog # AO1248a****Specification**

---

**Mammaglobin-1 Antibody - Product Information**

Application	WB, E
Primary Accession	<a href="#">Q13296</a>
Reactivity	Human
Host	Mouse
Clonality	Monoclonal
Isotype	IgG1

**Description**

Mammaglobin is a gene that is expressed almost exclusively in the normal breast epithelium and human breast cancer. It is a member of the secretoglobulin gene family and forms a heterodimer with lipophilin B. It has been suggested that mammaglobin may be a useful marker for breast cancer clinical research. Studies investigating the detection of mRNA by RT PCR from circulating carcinoma cells in the peripheral blood of breast cancer patients have shown that mammaglobin is a highly specific marker and correlates with several prognostic factors, such as lymph node involvement.

**Immunogen**

Purified recombinant fragment of Mammaglobin-1 expressed in E. Coli. <br />

**Formulation**

Ascitic fluid containing 0.03% sodium azide.

**Mammaglobin-1 Antibody - Additional Information**

**Gene ID** 4250

**Other Names**

Mammaglobin-A, Mammaglobin-1, Secretoglobulin family 2A member 2, SCGB2A2, MGB1, UGB2

**Dilution**

WB~~1/500 - 1/2000

E~~N/A

**Storage**

Maintain refrigerated at 2-8°C for up to 6 months. For long term storage store at -20°C in small aliquots to prevent freeze-thaw cycles.

**Precautions**

Mammaglobin-1 Antibody is for research use only and not for use in diagnostic or therapeutic procedures.

**Mammaglobin-1 Antibody - Protein Information**

**Name** SCGB2A2

**Synonyms** MGB1, UGB2

**Cellular Location**  
Secreted.

**Tissue Location**  
Mammary gland specific. Over-expressed in breast cancer

### **Mammaglobin-1 Antibody - Protocols**

Provided below are standard protocols that you may find useful for product applications.

- [Western Blot](#)
- [Blocking Peptides](#)
- [Dot Blot](#)
- [Immunohistochemistry](#)
- [Immunofluorescence](#)
- [Immunoprecipitation](#)
- [Flow Cytometry](#)
- [Cell Culture](#)

### **Mammaglobin-1 Antibody - Images**

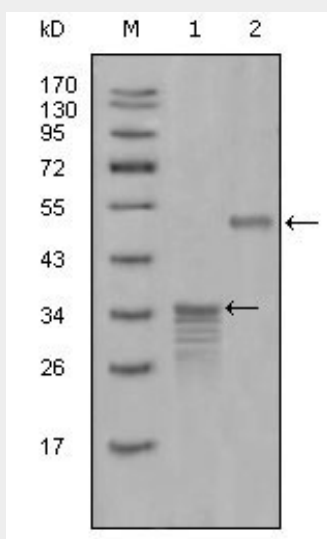


Figure 1: Western blot analysis using Mammaglobin-1 mouse mAb against full-length GST- Mammaglobin-1 (1) and full-length MBP- Mammaglobin-1 (aa1-193) recombinant protein (2).

### **Mammaglobin-1 Antibody - References**

1. Am J Clin Pathol. 2004 May;121(5):637-43.
2. Eur J Surg Oncol. 2007 Feb;33(1):16-22.